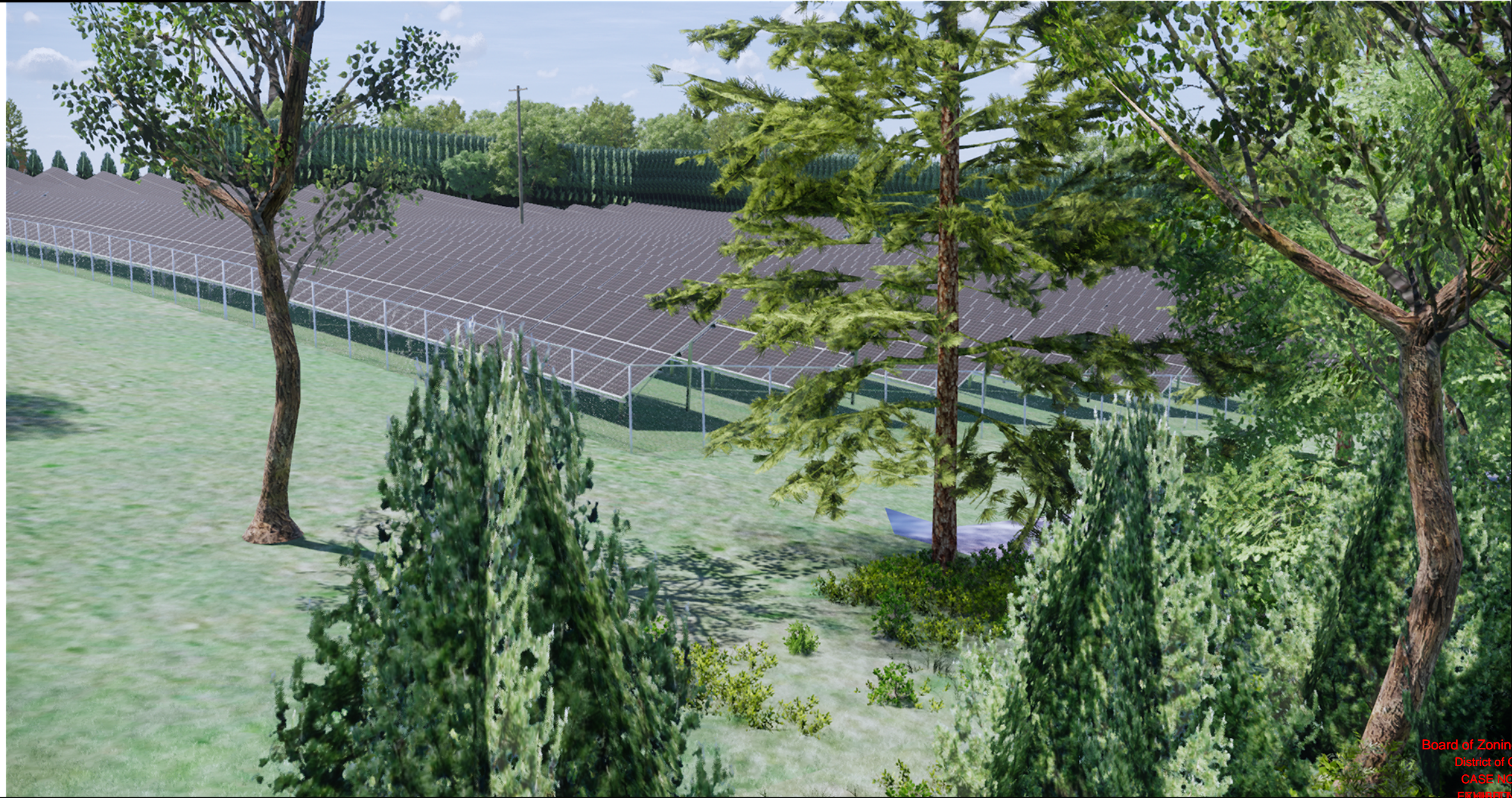




Perry Street NE
Closest Residence
Second Story View











Solar Energy Services, Inc.
1514 Jabez Run, Suite # 103 Millersville Maryland, 21108

Catholic Charities
2800 Otis St. NE
Washington, DC 20018



Solar Operations

Noise level Comparison	
78 dB	Washing Machine
73 dB	Outdoor A/C Unit
70 dB	Hair Dryer
60 dB	Normal Conversation
50 dB	Average Home
40 dB	Quiet Library
35 dB	Whisper
30 dB	Quiet Bedroom at Night
25 dB	Normal breathing
10 dB	Threshold of hearing
65 dB	Transformer
65 dB	Inverters

	Curb cut (existing)		Existing Utility Line		DC wires from solar panels		Transformer
	Point of Interconnection		AC wire from inverters to transformer to utility		Combiner Box		Inverters

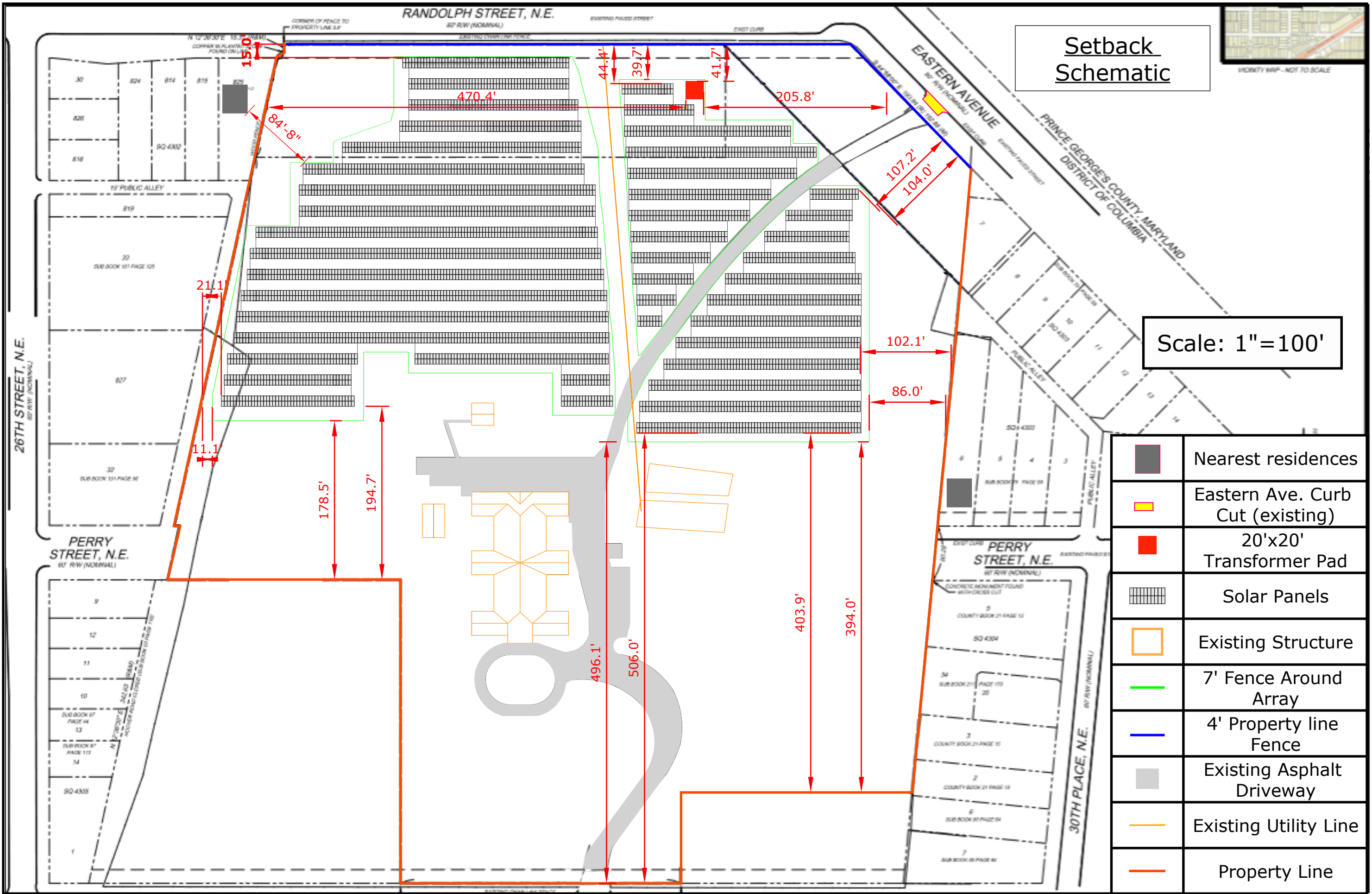
Joshua Clark, MLA
Anacostia Watershed Society



Solar Energy Services, Inc.
1514 Jabez Run, Suite # 103 Millersville Maryland, 21108

Catholic Charities
2800 Otis St. NE
Washington, DC 20018

S 002



Joshua Clark, MLA
 Anacostia Watershed Society



1514 Jabez Run, Suite # 103 Millersville Maryland, 21108

Catholic Charities
 2800 Otis St. NE
 Washington, DC 20018